

# GCJ188R71H473KA12#

“#” at the end indicates the package specification code.



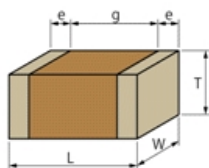
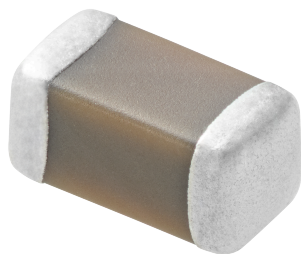
## < List of part numbers with package codes >

GCJ188R71H473KA12D      GCJ188R71H473KA12J

## Applications

Unsuitable Applications	Please be sure to read and comply with these "Precautions for use."
Specific Applications	Automotive powertrain/safety equipment, Automotive infotainment/comfort equipment, Medical equipment [GHF A/B/C] except for implant equipment Please refer to Our Website and specifications, etc. for information about the performance, functions, quality, management, and safety required for the above applications, and use Products after confirming the performance and reliability of the actual Product.

## Appearance & Shape



## Notices

Resin external electrode products

## References

Packaging	Specifications	Standard Packing Quantity
D	φ180mm Reel Paper Tape	4000
J	φ330mm Reel Paper Tape	10000

Mass (typ.)	
1 piece	6.3mg

### Attention


1. This datasheet is downloaded from the website of Murata Manufacturing Co., Ltd. Therefore, its specifications are subject to change or our products in it may be discontinued without advance notice. Please check with our sales representatives or product engineers before ordering.

2. This datasheet has only typical specifications because there is no space for detailed specifications.

Therefore, please review our product specifications or consult the approval sheet for product specifications before ordering.

# GCJ188R71H473KA12#

“#” at the end indicates the package specification code.



## Specifications

Length	1.6±0.2mm
Width	0.8±0.1mm
Thickness	0.8±0.1mm
Capacitance	47000pF ±10%
Distance between external terminals g	0.5mm min.
External terminal size e	0.2 to 0.5mm
Operating Temperature Range	-55°C to 125°C
Rated Voltage	50Vdc
Size code in inch(mm)	0603 (1608M)
Capacitance change rate	±15.0%
Temperature characteristics (complied standard)	X7R(EIA)
Temperature range of temperature characteristics	-55°C to 125°C

### Attention

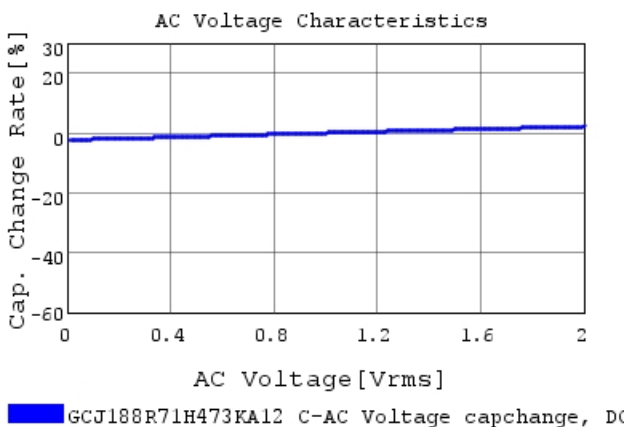
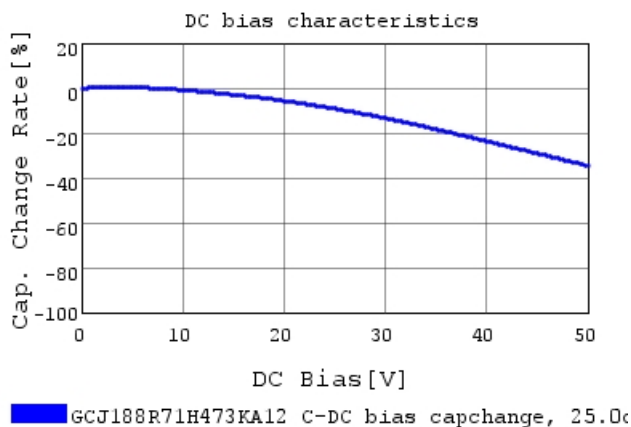
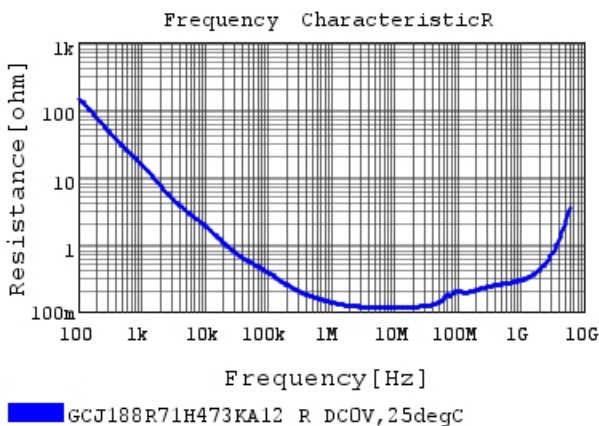
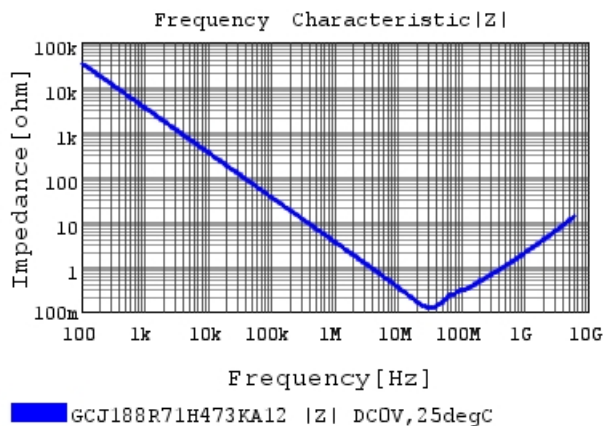
- 1.This datasheet is downloaded from the website of Murata Manufacturing Co., Ltd. Therefore, it's specifications are subject to change or our products in it may be discontinued without advance notice. Please check with our sales representatives or product engineers before ordering.
- 2.This datasheet has only typical specifications because there is no space for detailed specifications.  
Therefore, please review our product specifications or consult the approval sheet for product specifications before ordering.

# GCJ188R71H473KA12#

“#” at the end indicates the package specification code.

## Characteristic Data

The charts below may show another part number which shares its characteristics.

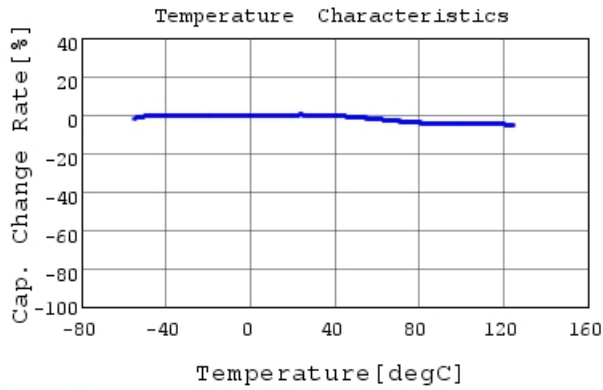


### Attention

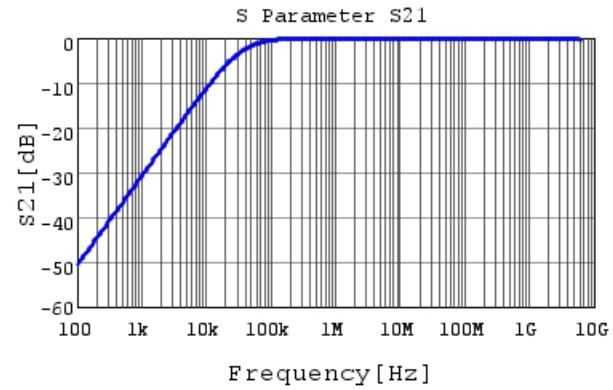
- 1.This datasheet is downloaded from the website of Murata Manufacturing Co., Ltd. Therefore, it's specifications are subject to change or our products in it may be discontinued without advance notice. Please check with our sales representatives or product engineers before ordering.
- 2.This datasheet has only typical specifications because there is no space for detailed specifications.  
Therefore, please review our product specifications or consult the approval sheet for product specifications before ordering.

# GCJ188R71H473KA12#

“#” at the end indicates the package specification code.



GCJ188R71H473KA12 C-Temp. capchange, DC0.0V,



GCJ188R71H473KA12 S21 DC0V, 25degC

## Attention

- 1.This datasheet is downloaded from the website of Murata Manufacturing Co., Ltd. Therefore, it's specifications are subject to change or our products in it may be discontinued without advance notice. Please check with our sales representatives or product engineers before ordering.
- 2.This datasheet has only typical specifications because there is no space for detailed specifications.  
Therefore, please review our product specifications or consult the approval sheet for product specifications before ordering.