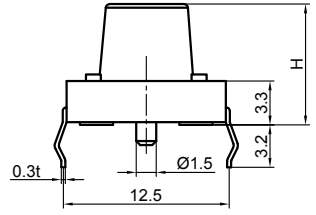
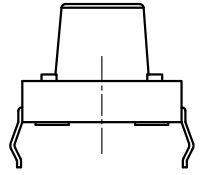
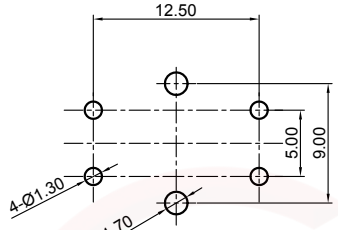
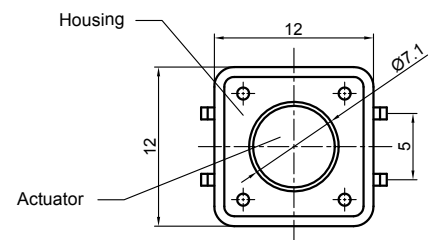


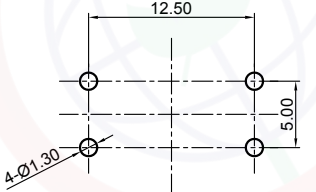
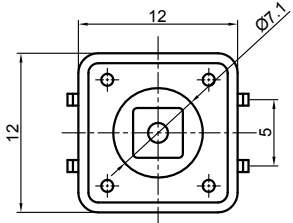
Dept	
Qty	
DC	1
ED	1
IE	1
ISO	1
PD	1
R&D	1
SD	1
QA	1
QC	1
QE	1

The information provided herein is from CONNELY Electronic Co., Ltd. and is confidential. Any disclosure to a party other than the recipient is prohibited. The intellectual properties and its rights contained herein, including but not limited to, trademarks, patents, copyrights, trade secrets, and technical know-how, are owned exclusively by CONNELY or its affiliates. Unauthorized use or reproduction of any part of this document is strictly prohibited. CONNELY may enforce its intellectual property rights at its own discretion, failures or delays in exercise of such rights, does not constitute a waiver of such rights.

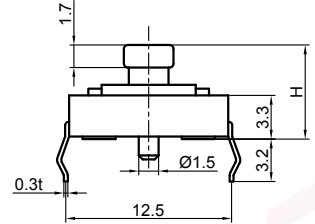
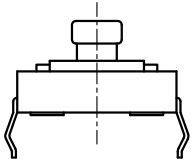


Without post

Without cover

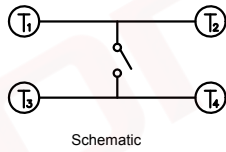


Recommend PCB layout
Tolerance:±0.05
(W/O Post)



Without post

With cover



Schematic



(Series Image-Reference Only)

REV.	DESCRIPTION	DRAWN	CHECKED	APPROVED
A	NEW RELEASE	HP 23/06/05'		LJC 23/06/05'
E	DRAWING UPDATE	JLZ 05/24/19'		

NOTES:

- Specifications
 - Switch function: Single pole Single throw
 - Contact rating: 50mA at 12vdc
 - Insulation resistance:100MΩ min at 500vdc
 - Contact resistance:100mΩ max
 - Operating life:50,000-100,000 cycles
 - Operating force: see below
 - Stop strength: place the switch such that vertical, a static load of 3kgf shall be applied in the direction of stem,operation for a period of 15 secs.
 - Stroke: (12x12)0.35±0.1mm
 - Operation temperature range: -20°C to 70°C
 - Storage temperature range: -20°C to +70°C
 - Wave soldering: recommended solder temperature at 500°F(260°C)max. 5 seconds,subject to pcb 1.6mm thickness.
 - Hand soldering: use a soldering iron of 30 watts,controlled at 608°F(320°C)approximately 2 seconds while applying solder.

3. Product number code:

DS1041 - X X X X X X X X X X

- Post support:
 - X: W/O Post
 - N/A Code: W/ Post
- Operating Life
 - 5: 50000 cycles
 - 10: 100000 cycles
- Operating force
 - 130: 130gf 160: 160gf
 - 170: 170gf 250: 250gf
- Cover type
 - X: W/O cover
 - S: W/ cover(For H=7.3mm only)
- Packing type
 - A: Polybag
 - B: Tube
- Actuator color
 - U: Blue K: Black N: Brown R: Red
 - S: Salmon Y: Yellow
- Housing color
 - U: Blue K: Black N: Brown R: Red
 - S: Salmon Y: Yellow
- Profile height(DIM.H, H>7.3 The cover is cylindrical,Black)
 - 1:4.3mm 2:5.0mm 3:7.0mm 4:7.3mm
 - 5:9.5mm 6:13.0mm 7:7.5mm 8:8.0mm
 - 9:8.5mm 10:12.0mm 11:12.5mm 12:17.0mm
 - 13:7.8mm 14:9.0mm 15:10.0mm 16:11.0mm
 - 17:15.0mm 18:20.0mm 19:14.0mm
- Size
 - 2:12mmX12mm

GENERAL TOLERANCE		ANGLE TOLERANCE		PROJECTION		TITLE
X.	±0.60	X.	±5°	UNITS	mm	TACT SWITCH DIP TYPE
.X	±0.38	.X	±3°	SHEET SIZE	A4	SERIES DS1041 SERIES
.XX	±0.25	.XX	±2°			
DRAWING TYPE		CUSTOMER		晨翔电子有限公司 CONNELY CONNELY ELECTRONIC CO., LTD		
SCALE		1:1				
DRAWING NO.		C-DS1041-XXXXXXXX-X-E				