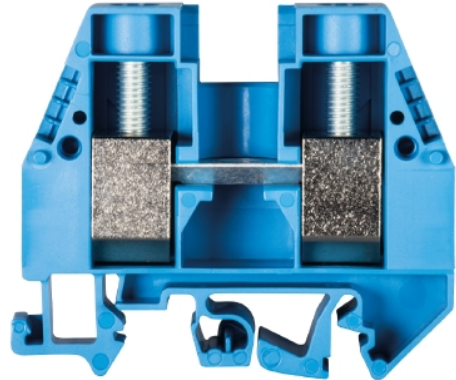


Data sheet

Commercial Art.No.: 57.535.1155.6

Feed-through terminal WKI 35 / U BL/V0

Feed-through terminal with Screw connection for mounting on TS 35/ TS 32, nominal cross section: 35 mm², width: 16 mm, color: blue



Commercial Art.No.	57.535.1155.6
EAN	4015573570801
Order Unit	20

Certificates / Approvals



Technical data

General

Nominal cross section	35 mm ²
Color	Blue
Number of levels	1
Number of clamp positions per level	2
Width/grid dimension	16 mm
Insulating housing	PA666
Inflammability class of insulation material acc. with UL94	V0
Explosion-tested version "Ex e"	No
Mounting method	DIN rail (top hat rail)/G-rail
Terminal blocks for electrical installations	yes

Technical data

Rated current	125 A
Rated voltage	400 V
Rated impulse voltage	6 kV
Pollution degree	3
Closing plate required	yes
Type of insulation material	Thermoplastic
Length	58 mm

Connection Data

Connection type 1	screw connection
-------------------	------------------

Connection type 2	screw connection
Minimum cross section fine stranded	16 mm ²
Maximum cross section fine stranded	35 mm ²
Minimum cross section stranded	16 mm ²
Maximum cross section stranded	50 mm ²
Wire strip length	13 mm
Torque conductor mounting	2 Nm

Technical Data UL/CSA

Cross section UL	10-2 AWG
Voltage UL	600 V
Current factory wiring	95 A
Current field wiring	95 A
Cross section CSA	10-2 AWG
Voltage CSA	600 V
Current CSA	110 A

Classification

ECLASS 11	
ECLASS 8.1	27141120
ETIM 7.0	EC000897
ETIM 6.0	EC000897
ETIM 5.0	EC000897
ETIM 4.0	EC000897
ETIM 3.0	EC000897

Product compliance

ROHS conformity status	Compliant/Exempted
ROHS exceptions	III-6(c)
REACH-SVHC conformity status	Duty-To-Declare
REACH-SVHC substances	Lead
REACH-SVHC CAS numbers	7439-92-1

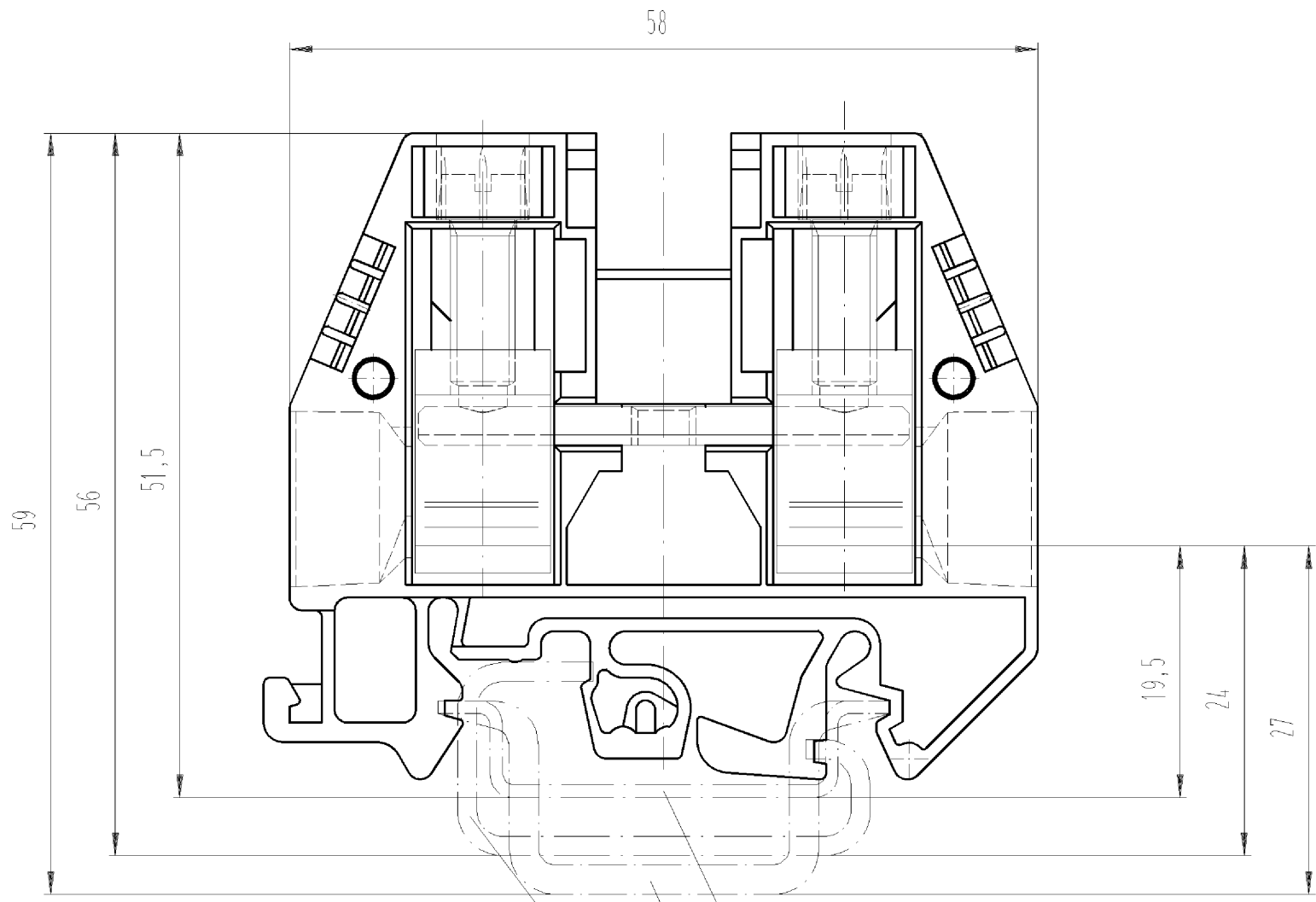
Accessories

Commercial Art.No.:	Article-type description:	Description:
Z7.285.4227.0	Insulated jumper bar IVB WKI 35 - 2	Cross connector, insulated for DIN rail terminal blocks type WKI ..., 2 - pole
Z7.285.4327.0	Insulated jumper bar IVB WKI 35 - 3	Cross connector, insulated for DIN rail terminal blocks type WKI ..., 3 - pole
Z7.285.4427.0	Insulated jumper bar IVB WKI 35 - 4	Cross connector, insulated for DIN rail terminal blocks type WKI ..., 4 - pole
Z7.285.4527.0	Insulated jumper bar IVB WKI 35 - 5	Cross connector, insulated for DIN rail terminal blocks type WKI ..., 5 - pole
Z7.285.4627.0	Insulated jumper bar IVB WKI 35 - 6	Cross connector, insulated for DIN rail terminal blocks type WKI ..., 6 - pole
98.190.0000.0	Mounting rail TS 32 UNPERF - l:2000mm	Mounting rail G 32, unslotted, Höhe 5,5 mm, length 2 m, material steel. galv. zinc-plated and dichromated
98.190.1000.0	Mounting rail TS 32 PERF 15mm - l:2000mm	Mounting rail G 32, slotted, Höhe 15 mm, length 2 m, material steel. galv. zinc-plated and dichromated

98.210.0000.0	Mounting rail TS 32 UNPERF AL - l:2000mm	Mounting rail G 32, unslotted, Höhe 15 mm, length 2 m, material Aluminium
98.220.0000.0	Mounting rail TS 32 UNPERF CU - l:2000mm	Mounting rail G 32, unslotted, Höhe 15 mm, length 2 m, material E copper
98.300.0000.0	Mounting rail TS 35x7,5 UNPERF - l:2000mm	Mounting rail TS 35, unslotted, size 7,5 mm, length 2 m, material steel. galv. zinc-plated and dichromated
98.300.1000.0	Mounting rail TS 35x7,5 PERF 15mm - l:2000mm	Mounting rail TS 35, slotted, size 7,5 mm, length 2 m, material steel. galv. zinc-plated and dichromated
98.300.1900.0	Mounting rail TS 35x7,5 PERF 25mm - l:2000mm	Mounting rail TS 35, slotted, size 7,5 mm, length 2 m, material steel. galv. zinc-plated and dichromated
98.360.0000.0	Mounting rail TS 35x15-2,3 UNPERF - l:2000mm	Mounting rail TS 35, unslotted, size 15 mm, length 2 m, material steel. galv. zinc-plated and dichromated
98.360.0004.0	Mounting rail TS 35x15-2,3 UNPERF FZN - l:2000mm	Mounting rail TS 35, unslotted, size 15 mm, length 2 m, material steel, hot galvanized
98.370.0000.0	Mounting rail TS 35x15 UNPERF - l:2000mm	Mounting rail TS 35, unslotted, size 15 mm, length 2 m, material steel. galv. zinc-plated and dichromated
98.370.1000.0	Mounting rail TS 35x15 PERF 15mm - l:2000mm	Mounting rail TS 35, slotted, size 15 mm, length 2 m, material steel. galv. zinc-plated and dichromated
98.380.0000.0	Mounting rail TS 35x15-2,3 UNPERF CU - l:2000mm	Mounting rail TS 35, unslotted, size 15 mm, length 2 m, material E copper
07.311.8855.0	End plate API 35/V0	End plate for DIN rail terminal blocks type WKI 35..., color: grey
07.311.8855.6	End plate API 35 BLAU/V0	End plate for DIN rail terminal blocks type WKI 35..., color: blue

These dimensions will be especially checked at delivery
 Only inspection dimensions
 With ±E marked dimensions are only valid for internal use

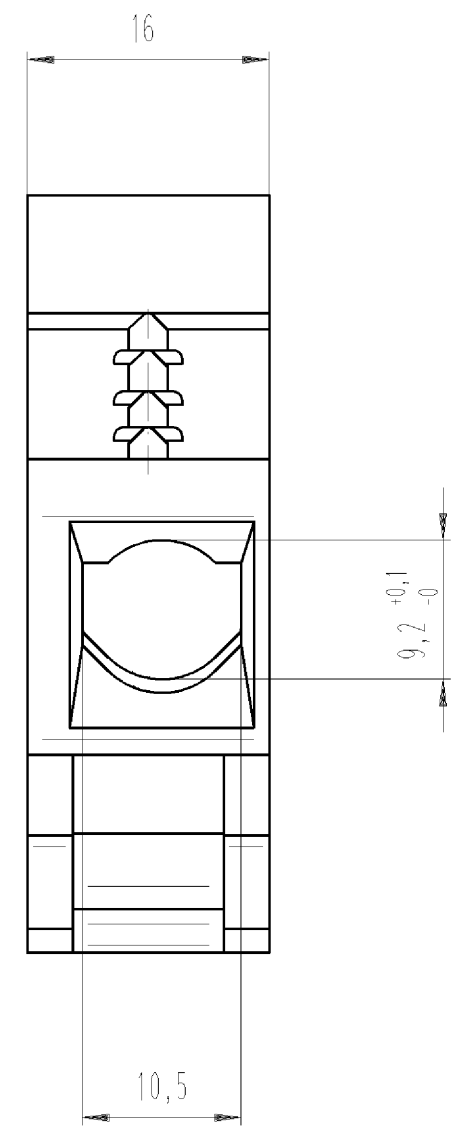
Diese Maße werden bei Abnahme besonders geprüft
 Ausschließlich Prüfmaße
 Mit ±E gekennzeichnete Maße sind nur für interne Zwecke gültig



Hutschiene EN 60715-35x7,5
 mounting rail EN 60715-35x7,5

Hutschiene EN 60715-35x15
 mounting rail EN 60715-35x15

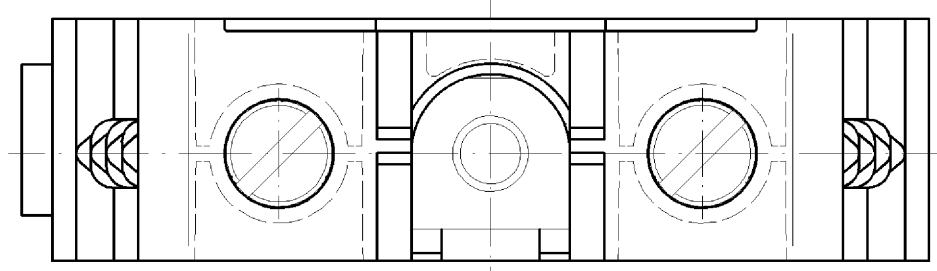
G-Schiene EN 60715-G32
 G-rail EN 60715-G32



* spezielle Verpackung
 specific package

Teile-Nr. Part-number	Typ type	Farbe colour
57.535.1155.0	WKI 35/U/VO	grau/grey
57.535.1155.6	WKI 35/U BLAU/VO	blau/blue
57.535.1155.7	WKI 35/U GRUEN/VO	grün/green
* 57.535.1195.0	WKI 35/U/VO	grau/grey
* 57.535.1195.6	WKI 35/U BLAU/VO	blau/blue

Weitere Daten siehe Katalog
 further data see catalog



Tolerierung nach DIN 7167/Tolerance system acc. to DIN 7167.
 (This DIN-standard describes the envelope principle. According to the envelope principle the deviations of form and parallelism are limited by the size tolerances).

ja/yes Stoffverbots- und Deklarationsliste nach UU-TQM-05/03 ist einzuhalten.
 Conformity with Wieland document UU-TQM-05/03 (list of prohibited / declarable hazardous substances) to be declared!

Freitoleranz nach General tolerance CAD - Zeichnung, keine manuellen Änderungen CAD - drawing, no manual modifications allowed 1. Verwendung: First Use: Blatt: 1 von 1 Sheet: of 1

gezeichnet/drawn	2004	Tag/Date	Name	T	Zeichnung Nr./Drawing No.	Index
geprüft/checked	23.11.	Schmitt J.				
Normgepr. Stand. check	-	-				

Maße in mm/Dimensions are in mm

Vol.	mm ³	Ofl./Surf.	mm ²	Ersatz für/Replacement for: -
a 26.05.2009/		wieland		Type
Index	Datum / Blatt Date / Sheet	Elektrische Verbindungen		Benennung/Title
Änderung/Revision				DURCHGANGSKLEMME
				Modular terminal

Weitergabe sowie Vervielfältigung dieses Dokuments, Verwertung und Mitteilung seines Inhalts sind verboten, soweit nicht ausdrücklich gestattet. The reproduction, distribution and utilization of this document as well as the communication of its contents to others without express authorization is prohibited.

575351155001K_4_CAD/20236 Schmitt 2009-05-26T09:04:42 1.000